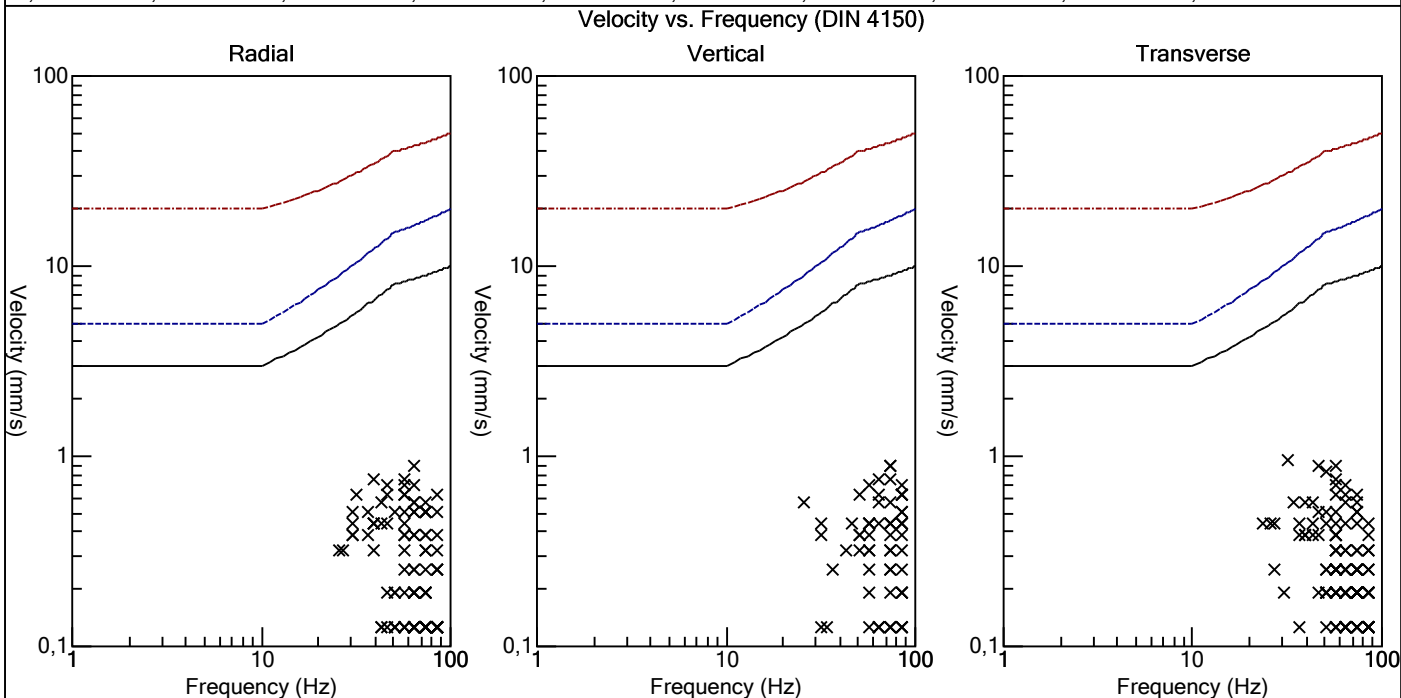
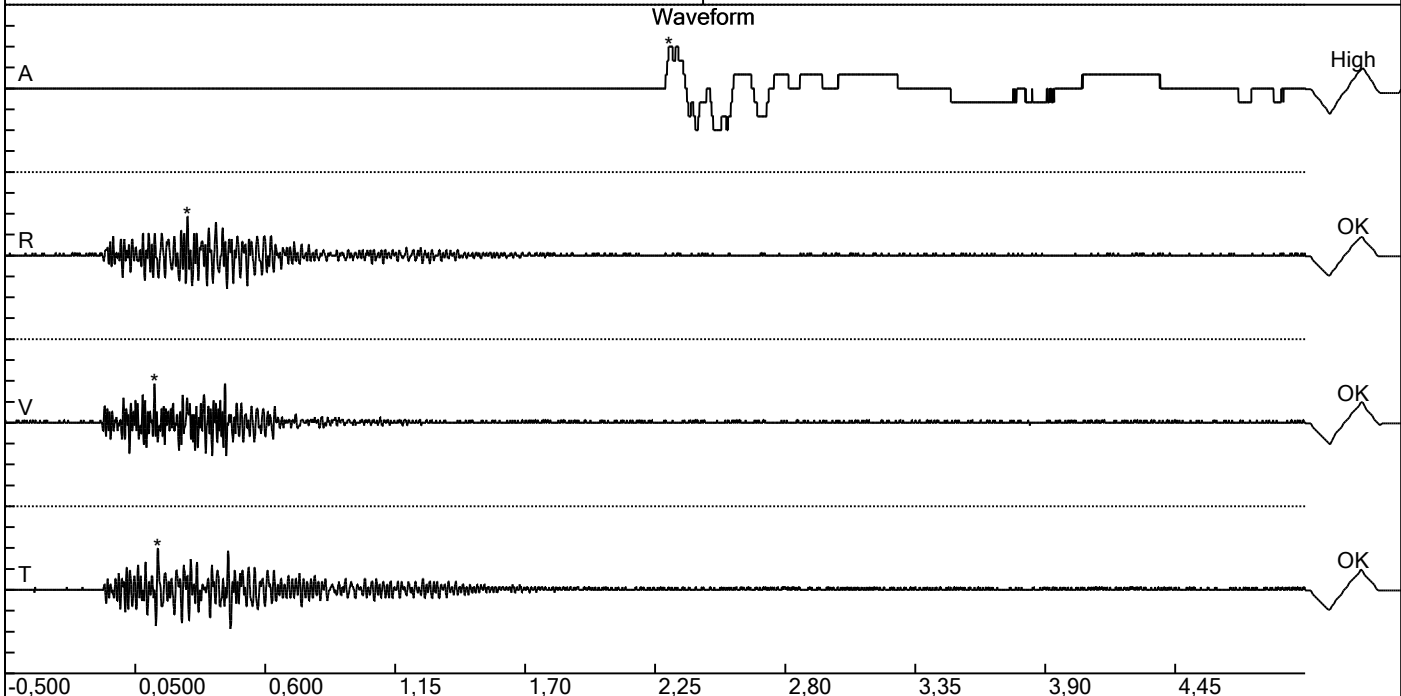


Carrière de BRS
 Comblain/Fraiture -4
 Tir du 01/10/2018
 Sismographe placé au
 261 Halleux
 4710 Comblain-au-Pont

Record: 2164201810011454124.dtb
 Number: 124
 Seismograph: Mini-Seis
 Type of Record: Waveform
 Date: 01-10-18 14:54:00
 SN: 2164
 Duration: 5,50 Seconds
 Sample Rate: 1024
 Pre-Trigger: 0,5 Seconds
 Seismic Trigger: 0,508 mm/s
 Acoustic Trigger: 142,1 dB
 Voltage: 6,4

Peaks and Frequencies	Graph Information
PPV Maximum: 0,953 mm/s A: 109,5 dB @ 6,5 Hz (2,31 s) R: 0,889 mm/s @ 64,0 Hz (0,271 s) V: 0,889 mm/s @ 73,1 Hz (0,132 s) T: 0,953 mm/s @ 32,0 Hz (0,146 s) Last Calibration Date: 21	Time Range: -0,500 s to 5,00 s Acoustic Scale: 0,0300 Mb/div Seismic Scale: 0,477 mm/s/div Time Intervals: 0,550 Seconds



Carrière de BRS
 Comblain/Fraiture -4
 Tir du 01/10/2018
 Sismographe placé au
 261 Halleux
 4710 Comblain-au-Pont

Record: 2164201810011454124.dtb
 Number: 124
 Seismograph: Mini-Seis
 Type of Record: Waveform
 Date: 01-10-18 14:54:00
 SN: 2164
 Duration: 5,50 Seconds
 Sample Rate: 1024
 Pre-Trigger: 0,5 Seconds
 Seismic Trigger: 0,508 mm/s
 Acoustic Trigger: 142,1 dB
 Voltage: 6,4

Peaks and Frequencies	Graph Information
PPV Maximum: 0,953 mm/s A: 109,5 dB @ 6,5 Hz (2,31 s) R: 0,889 mm/s @ 64,0 Hz (0,271 s) V: 0,889 mm/s @ 73,1 Hz (0,132 s) T: 0,953 mm/s @ 32,0 Hz (0,146 s) Last Calibration Date: 21	Time Range: -0,500 s to 5,00 s Acoustic Scale: 0,0300 Mb/div Seismic Scale: 0,477 mm/s/div Time Intervals: 0,550 Seconds

